



COPPER LAKE
RESOURCES LTD



Ontario's Next Big Discovery
June 2026

| **TSX.V: CPL**
OTCPINK: WTCZF

FORWARD-LOOKING STATEMENTS



Some of the statements in this presentation, other than statements of historical fact, are “forward-looking statements” and are based on the opinions and estimates of management as of the date such statements are made and are necessarily based on estimates and assumptions that are inherently subject to known and unknown risks, uncertainties and other factors that may cause actual results, level of activity, performance or achievements of Copper Lake Resources Ltd. (“Copper Lake”) to be materially different from those expressed or implied by such forward-looking statements. Such forward-looking statements and forward-looking information specifically include, but are not limited to, statements concerning the exploration prospects and projected resources of the properties of Copper Lake, future capitalization and market capitalization of copper Lake, the successful acquisition of additional projects, development of and future expansion drilling on the Marshall Lake property, and future development and resource expansion work on the Norton Lake property. Although Copper Lake believes the expectations expressed in such forward-looking statements are based on reasonable assumptions, such statements should not be in any way construed as guarantees of future performance and actual results or developments may differ materially. Accordingly, readers should not place undue reliance on forward-looking statements or information. Factors that could cause actual results to differ materially from those in forward-looking statements include without limitation: market prices for metals; the results of drilling; inability to raise the money necessary to incur expenditures required to retain and advance the properties; unexpected delays and costs inherent to consulting and accommodating rights of first Nations and other Aboriginal groups; environmental liabilities (known and unknown); general business, economic, competitive, political and social uncertainties; accidents, labour disputes and other risks of the mining industry; delays in obtaining government approvals; failure to obtain regulatory or shareholder approvals. For a more detailed discussion of such risks and other factors that could cause actual results to differ materially from those expressed or implied by such forward-looking statements. Refer to Copper Lake’s filings with Canadian securities regulators available on SEDAR at www.sedar.com The TSX-V has neither approved nor disapproved the contents of this presentation.

Limitation of Liability

Copper Lake is not liable for any direct, indirect, special, incidental or consequential damages arising out of the use of – or the inability to use – the information set forth in this presentation, whether based on breach of contract, breach of warranty, tort (including negligence) or otherwise. This includes but is not limited to the loss of profit, litigation or due to business interruption, even if Copper Lake or any of its authorized representatives was advised of the possibility of such damages. The negation of damages set forth above are fundamental elements of the basis of the agreement between Copper Lake and the readers of this presentation with such limitations.

Qualified Person

Donald Hoy, M.Sc., P.Geo., Copper Lake’s Vice President Exploration, is the Qualified Person responsible for technical content of this presentation.

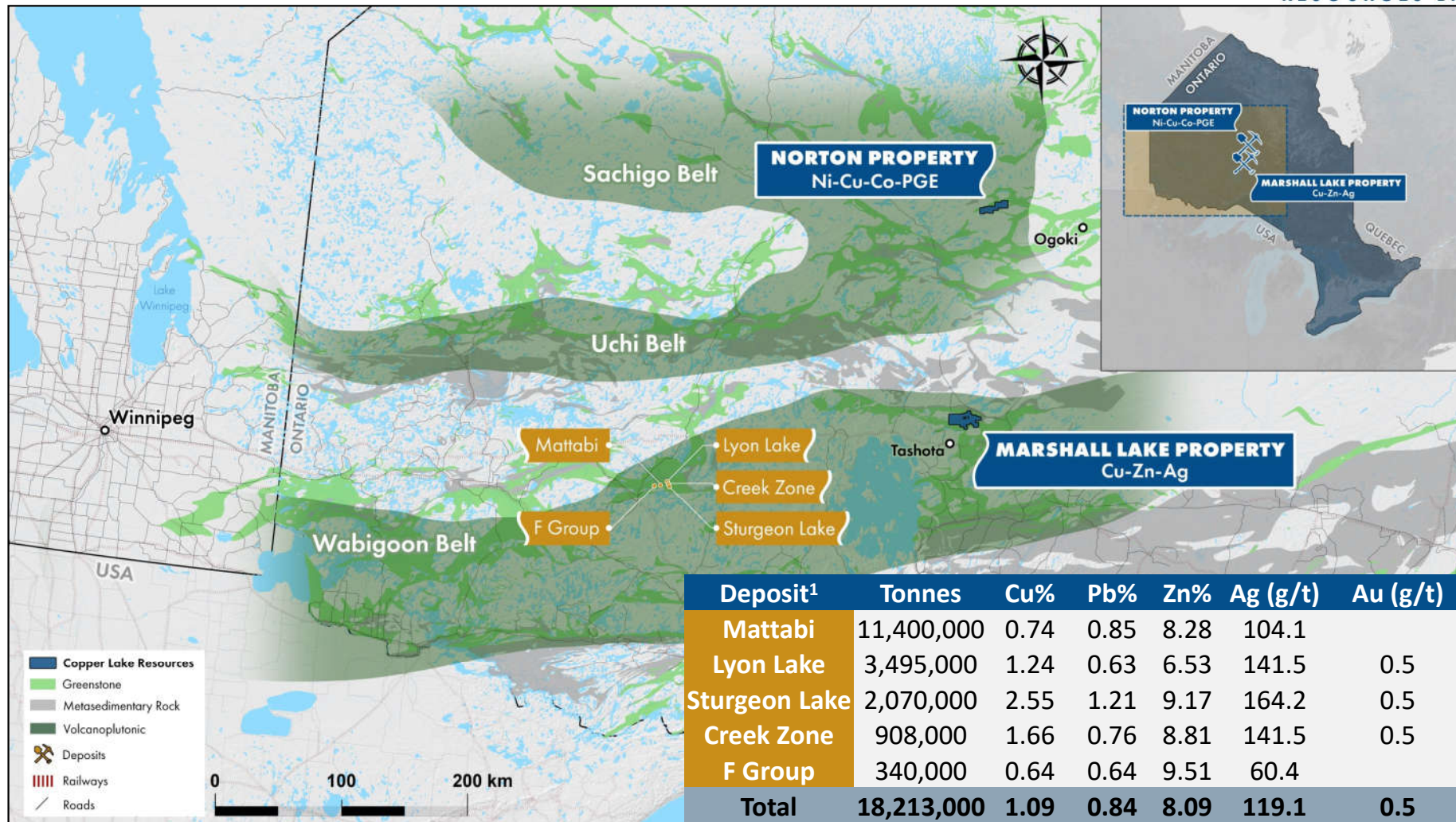
Why Copper Lake?

- The **Marshall Lake & Norton Lake properties** feature copper-zinc-silver as well as nickel-copper-cobalt-platinum group element mineralization respectively, all strategic metals in increasing demand to support the coming EV revolution
- Marshall Lake contains several high-grade Cu-Zn-Ag mineralized zones, including the Billiton deposit, containing a historical resource of 2.2 MT @ 4.2% Zn, 1.34% Cu & 2.5 oz/t Ag¹ (non-43-101 compliant)
- **2026 exploration program to focus on 3 high-priority targets with excellent potential for expansion, featuring high-grade copper and copper-zinc-silver mineralization in a volcanogenic massive sulphide-type (VMS) setting**
 - **For example, GAZ-06-02 drilled in 2006 intersected 27.1 metres of 2.03% copper and 37.9 g/t silver at a depth of 3 metres, and GAZ-07-05 drilled in 2007 intersected 6.7 metres of 4.47% copper and 86.5 g/t silver at a depth of 32 metres, and these have yet to be followed up.**
- Experienced, professional management team with a proven track record in mineral exploration, discovery, development and finance
- Norton Lake has a current 43-101 compliant resource featuring Ni-Cu-Co-PGEs with good potential for expansion and to make additional discoveries of like mineralization
- Properties located in the mining-friendly jurisdiction of Ontario

¹ The resource numbers referred to in the Billiton Deposit are considered as historic resources, not compliant under NI 43-101 guidelines and therefore should not be relied upon

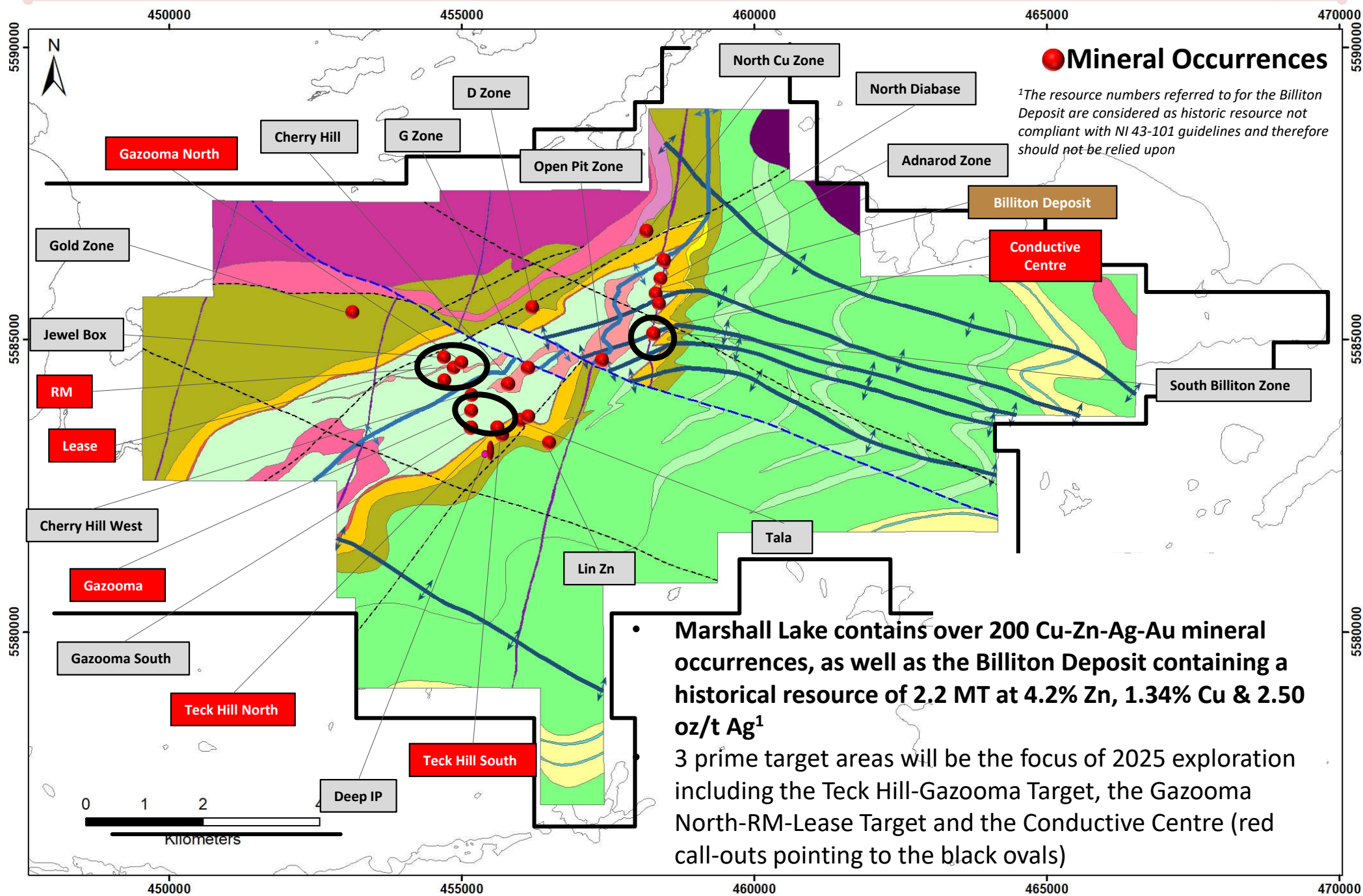


Marshall Lake & Norton Lake Property Locations

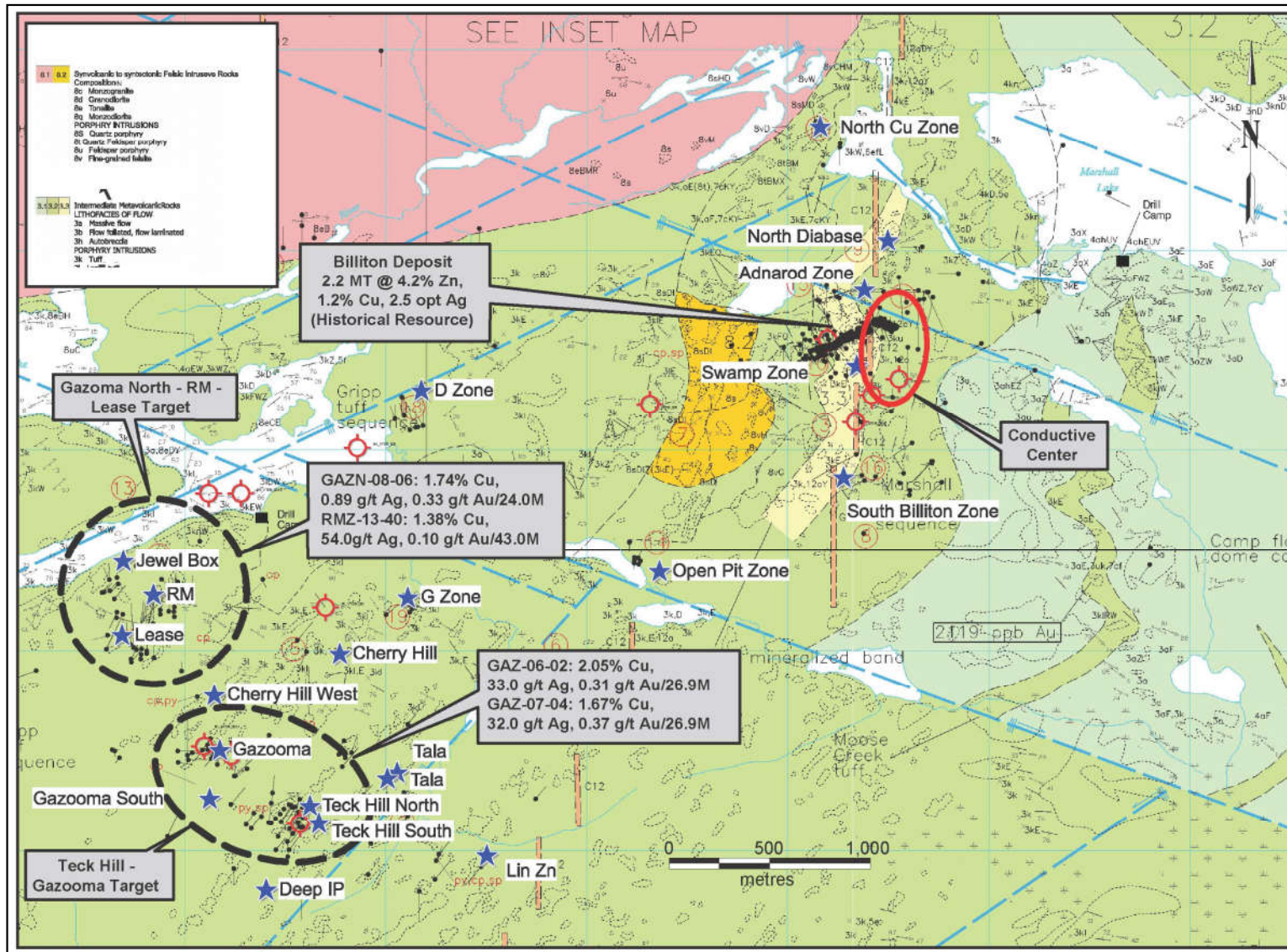


- Marshall Lake is located in the Wabigoon Belt, 200 km east of the Sturgeon Lake VMS district featuring historical production of 18.2 MT at 1.09% Cu, 0.84% Pb, 8.09% Zn, 119.10 g/t Ag & 0.50 g/t Au (Falconbridge Copper/Inmet Mining (1987-2004))
- Large 220 sq. km Marshall Lake property is road accessible, 250 km NW of Thunder Bay and can be explored year-round
- The Norton Ni-Cu-Co-PGE property is situated in the Uchi Belt in the 'Ring of Fire' and is currently only accessible by air

Marshall Lake Property - Geology & Mineral Occurrences



Priority Targets – 2026 Exploration Program

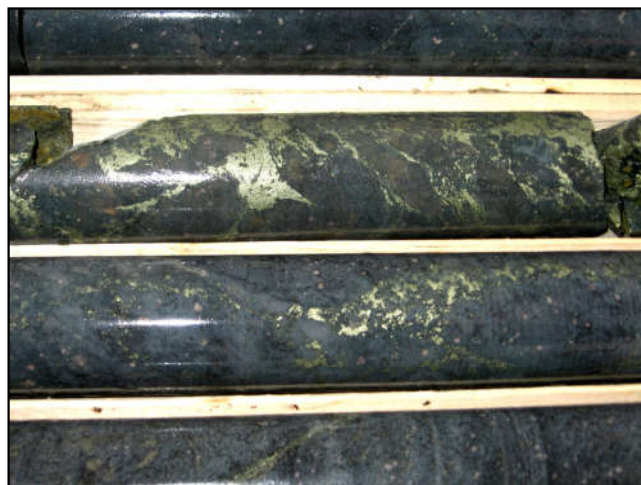


The Teck Hill – Gazooma Target, Gazooma North – RM – Lease Target (Black Dashed Circles) & The Conductive Centre (Red Oval) are large Mineralized Zones Containing High-Grade Copper, Zinc and Silver Mineralization in a VMS Setting

- The Teck Hill – Gazooma Target & the Gazooma North – RM – Lease Target are only drilled to depths of 150 metres below surface and are open at depth and along trend for expansion
- The **Conductive Centre target** contains high-grade copper-zinc-silver mineralization centred 300 metres below surface
- Conductors situated in the immediate locale of high-grade mineralization suggest excellent potential for expansion

Teck Hill - Gazooma & Gazooma North – RM - Lease Targets, Drill Results

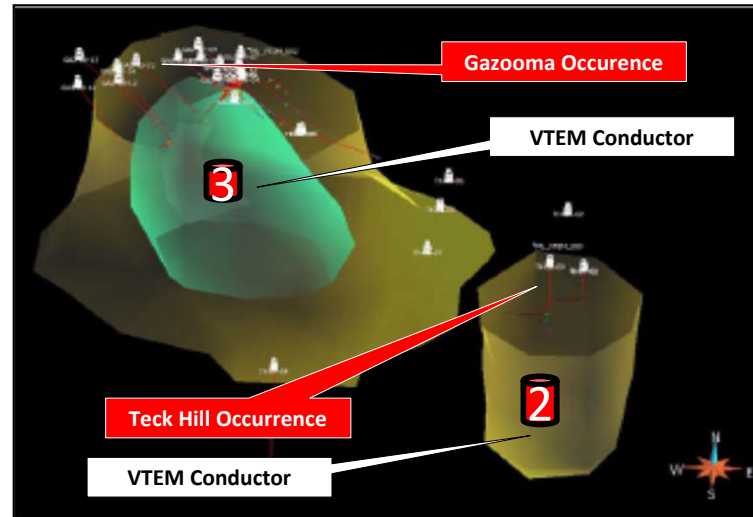
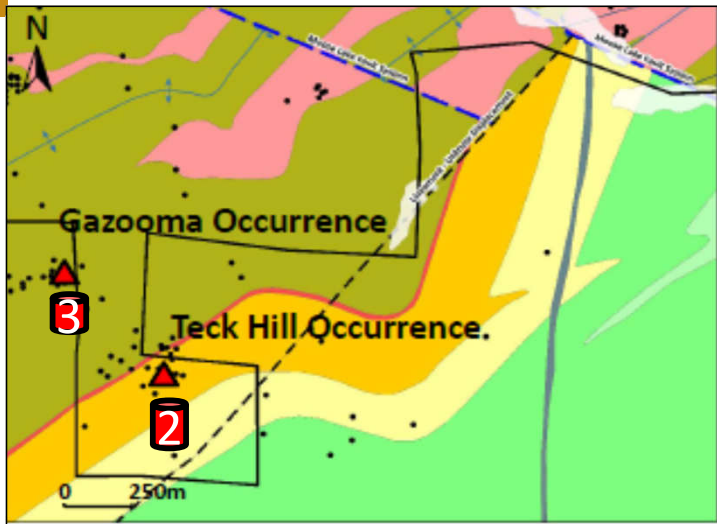
Hole No.	From (M)	To (M)	Width (M)	Cu (%)	Ag (g/t)	Au (g/t)	Target
GAZ-06-02	3.00	30.10	27.10	2.03	37.90	0.31	Teck Hill – Gazooma
	inc. 8.00	25.90	17.90	2.79	51.80	0.38	
GAZ-06-04	2.00	30.70	28.70	1.30	24.70	0.29	Teck Hill - Gazooma
	inc. 3.00	14.00	11.00	2.19	40.60	0.29	
GAZ-07-05	23.90	38.70	14.80	2.46	47.60	0.34	Teck Hill - Gazooma
	inc. 32.00	38.70	6.70	4.47	86.50	0.62	
TK-09-09	92.00	142.50	50.50	0.84	9.10	0.04	Teck Hill - Gazooma
	inc. 93.25	97.50	4.25	3.79	38.30	0.27	
	and 106.50	111.20	4.70	2.34	24.90	0.11	
GAZN-08-06	70.00	94.00	24.00	1.74	8.90	0.32	Gazooma North – RM - Lease
	inc. 85.00	90.00	5.00	3.36	17.10	0.68	
GAZN-10-15	149.00	172.00	23.00	1.34	6.70	0.29	Gazooma North – RM - Lease
	inc. 155.00	160.00	5.00	4.08	20.60	1.12	
RMZ-11-21	132.00	190.00	58.00	1.00	4.40	0.08	Gazooma North – RM - Lease
	inc. 155.00	160.00	5.00	3.73	16.40	0.31	
RMZ-13-40	144.00	187.00	43.00	1.38	5.40	0.04	Gazooma North – RM - Lease
	inc. 145.00	155.00	10.00	2.52	9.40	0.07	



High-Grade Chalcopyrite Mineralization Occurs as Bands, Patches and Heavy Disseminations

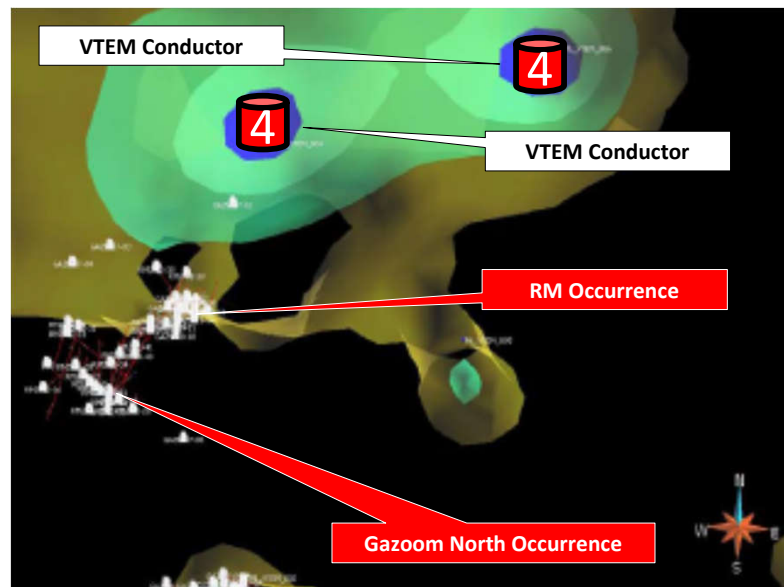
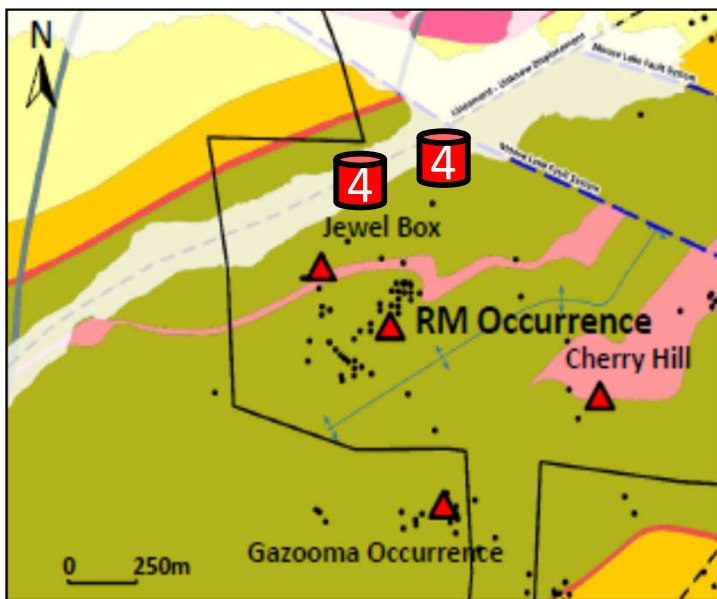
- **The Teck Hill – Gazooma & Gazooma North – RM – Lease targets** feature wide intersections of high-grade copper mineralization with significant silver and gold credits (stringer/footwall-type)
- Note the shallow depths of high-grade mineralization encountered in drilling completed to date
- **Mineralization remains open at depth and along trend at both targets**

Teck Hill - Gazooma & Gazooma North – RM – Lease Targets & Associated VTEM Conductors



The Teck Hill – Gazooma Occurrences Are Intimately Associated With VTEM Conductors That Persist Below The Depths of Diamond Drilling (Upper Left & Right Figures)

- Additional drilling is clearly warranted to fully test VTEM conductors 2 & 3 (red call-outs) in efforts to enlarge the high-grade copper zones



Two Prominent VTEM Conductors are Located to the North of the Gazooma North – RM – Lease Occurrences (Lower Left & Right Figures)

- Such conductors (red-call outs labelled number 4) have not been tested by previous diamond drilling and may be related to high-grade copper mineralization similar to the subject occurrences

Conductive Centre Target, Drill Results

Hole No.	From (m)	To (m)	Interval (m)	%Cu	% Zn	Ag (g/t)	Au (g/t)	Zone
MAR-21-03	47.33	48.05	0.72	1.18	5.81	119.00	0.01	Conductive Centre
	64.20	66.87	2.67	5.39	6.43	315.58	2.22	
	73.48	76.07	2.59	1.43	4.13	122.24	0.51	
	180.65	181.50	0.85	1.40	9.05	159.00	0.01	
MAR-22-01	137.15	139.25	2.10	0.53	3.00	26.30	0.02	Conductive Centre
	236.00	239.00	3.00	1.47	1.54	50.80	0.02	
	272.05	274.20	2.15	2.40	3.37	190.60	0.22	
	298.06	300.17	2.11	8.13	7.26	240.80	0.33	
	311.20	313.15	1.95	5.81	7.32	171.20	0.02	
	368.00	374.00	6.00	2.37	1.75	413.15	0.37	
	Inc. 371.55	372.76	1.21	2.26	2.66	1,580.00	1.28	
	MAR-22-02	128.89	129.25	0.36	0.15	5.83	17.80	
MAR-23-01	111.18	115.00	3.82	1.32	5.37	138.20	0.44	Conductive Centre
	Inc. 114.45	115.00	0.55	4.14	10.40	532.00	1.69	
	334.75	336.35	1.60	1.86	4.25	171.50	0.67	
	Inc. 335.50	336.05	0.55	0.30	13.00	390.00	0.40	
	365.50	373.63	8.13	1.60	0.44	90.00	0.35	



The Conductive Centre Has Yielded High-Grade Base & Precious Metal Values in Widespread Alteration Zones Commonly Seen Proximal to Large Volcanogenic Massive Sulphide Deposits Such as at the Sturgeon Lake Deposits

- The presence of several conductors associated with high-grade mineralization suggests excellent expansion potential
- Mineralization is open down-plunge and along trend

Heavy Chalcopyrite and Sphalerite Mineralization With Subordinate Pyrite From the Conductive Centre

Conductive Centre and Associated BHEM Conductors

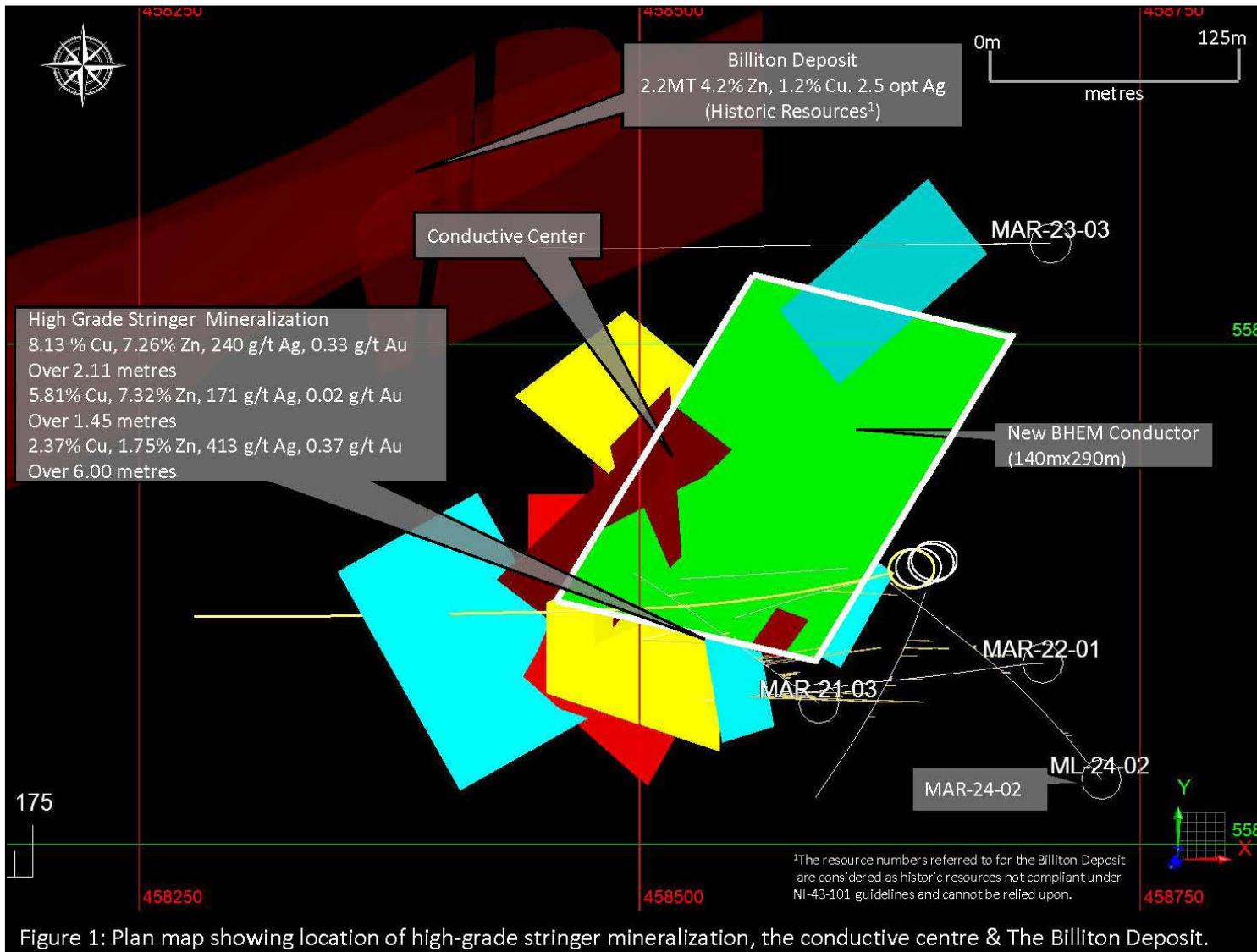


Figure 1: Plan map showing location of high-grade stringer mineralization, the conductive centre & The Billiton Deposit.

High-Grade Copper-Zinc-Silver VMS Mineralization is Closely Related to a Cluster of Moderate to Strong Conductors Delineated by Bore-Hole Electromagnetic (BHEM) Surveys

- The cluster of conductors has sizeable dimensions of 400 X 200 X 300 metres (in terms of length, width and height)
- Only the southern portion of the conductor cluster has been tested by diamond drilling to date (see adjacent plan map)
- Drilling continues to indicate a robust hydrothermal system capable of producing a significant VMS deposit
- Additional drilling is warranted to define the continuity and extent of high-grade mineralization encountered to date

Marshall Lake – Conceptual Model for Mineralization (Pre-Deformation)

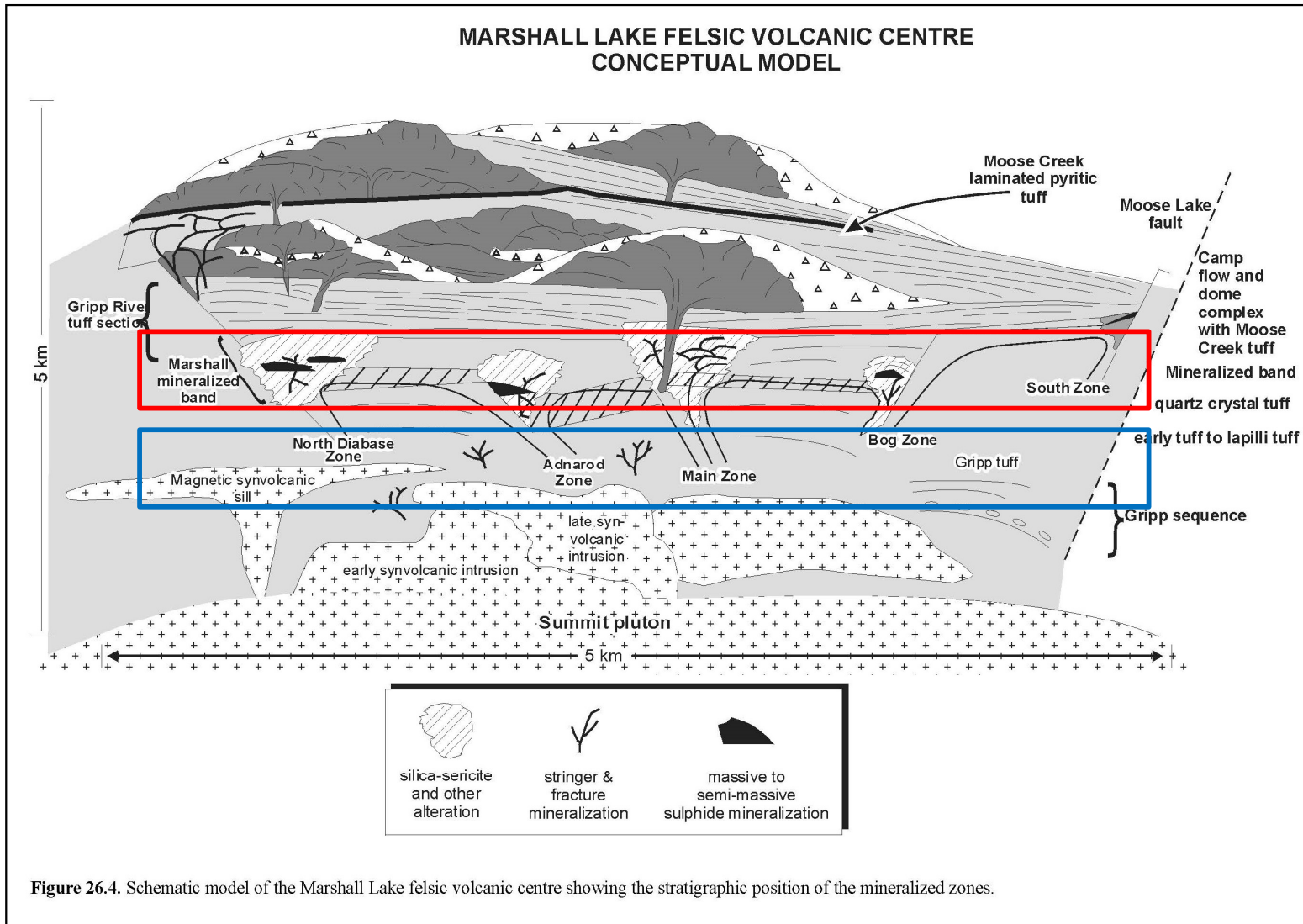
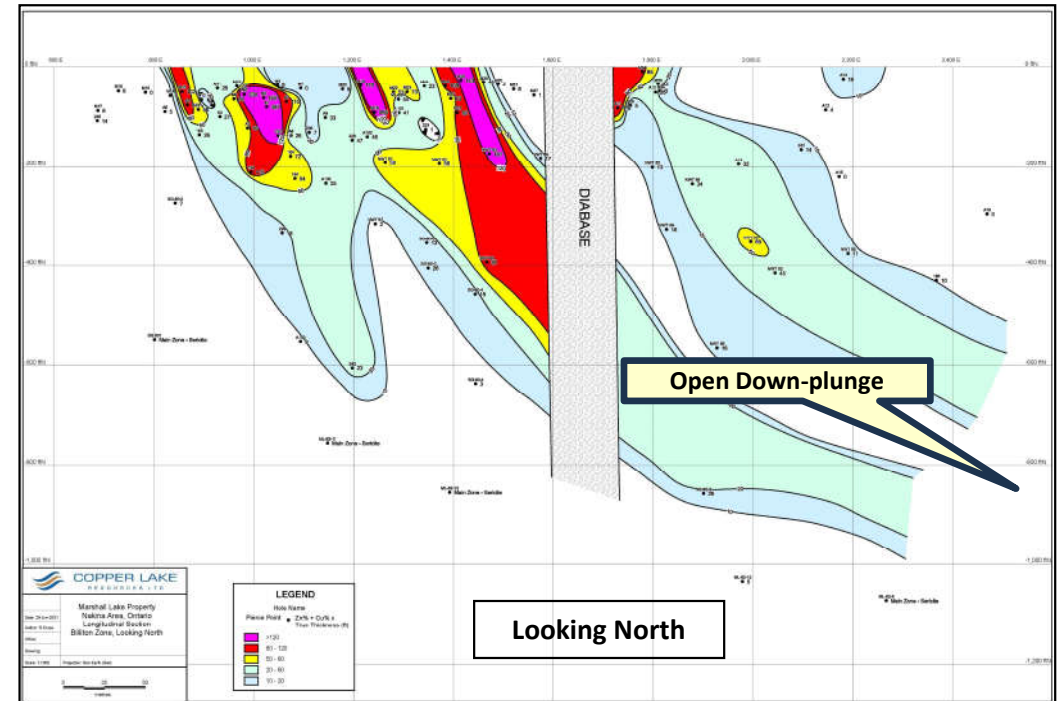
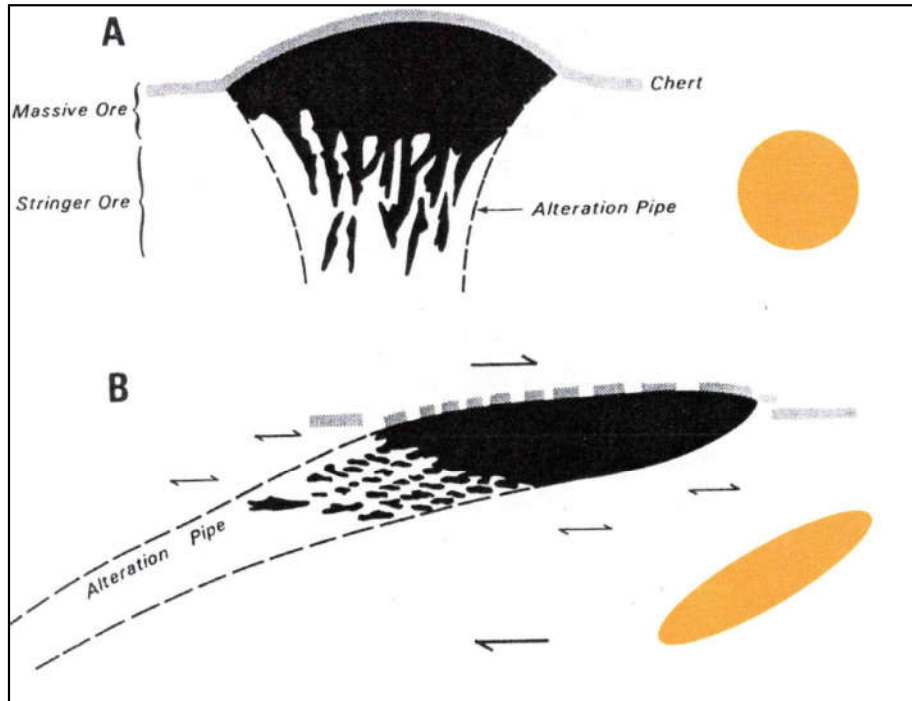


Figure 26.4. Schematic model of the Marshall Lake felsic volcanic centre showing the stratigraphic position of the mineralized zones.

Marshall Mineralized Band (red rectangle) is a Key Mappable Unit Containing the Bulk Of Semi-Massive to Massive Sulphide Mineralization Encountered to Date

- Future exploration efforts should be focused on exploring this band through detailed mapping, litho geochemistry, geophysics and diamond drilling
- **Stringer, footwall styles of mineralization occur underlying massive sulphide (blue rectangle), such as seen at the Gazooma, Teck-Hill and Gazooma North Occurrences**

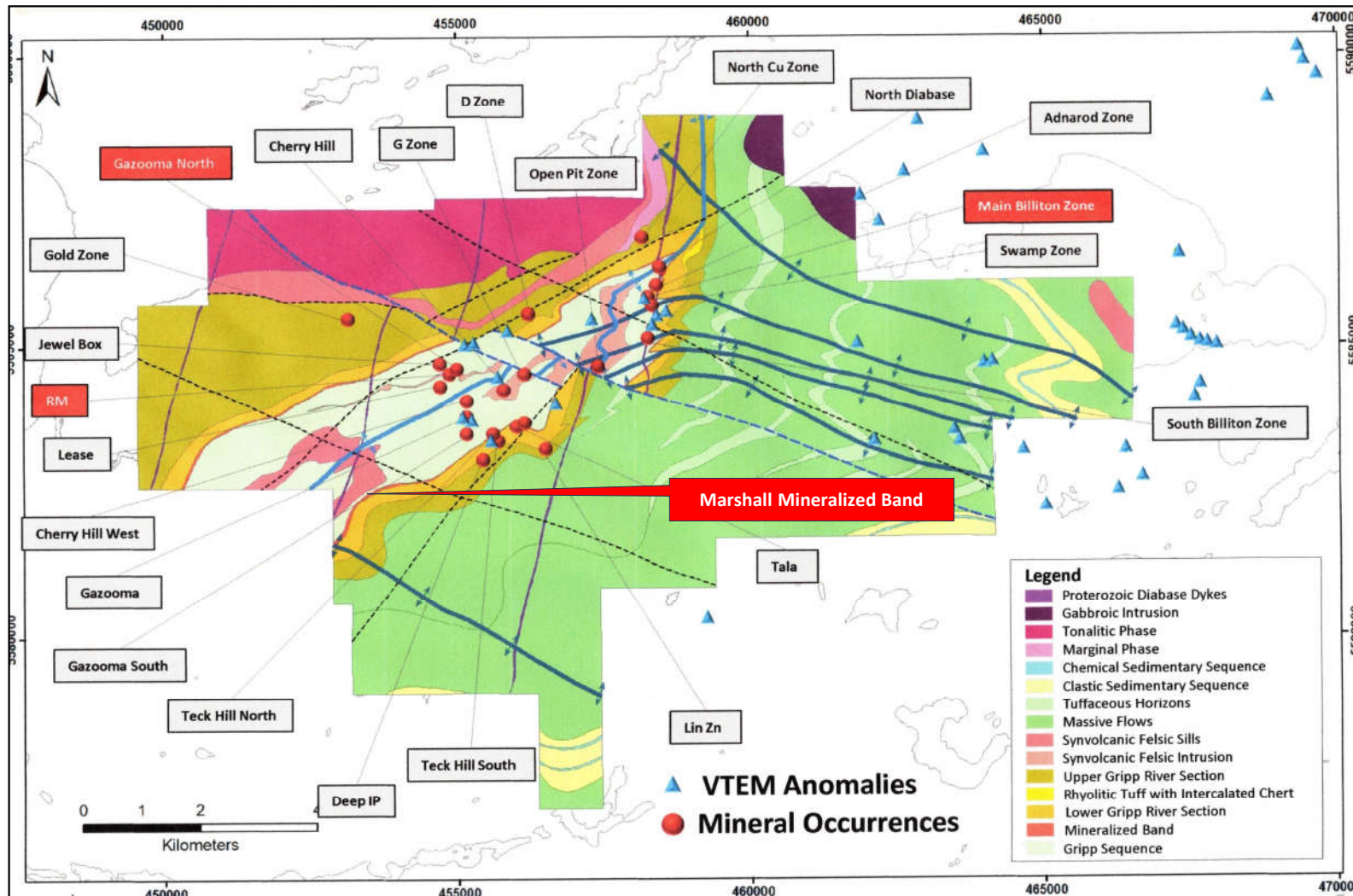
Transposition of Massive Sulphides – Billiton Zone



- Massive sulphide deposits are commonly modified by deformational events such as what is illustrated above where the fabric and orientation of the VMS system has been transposed into the foliation or in this case, a high-strain zone

- Billiton Zone has similarly been modified and transposed into the S2 foliation with an east-west trend and a shallow rake to the east
- All other mineral occurrences on the Marshall Lake property can be expected to have been affected by this same deformation event and have similar trends and morphologies

Marshall Lake – VTEM Anomalies, High Priority



- 2006-vintage VTEM survey yielded numerous conductors at Marshall Lake (blue triangles)
- **Highest priority anomalies are those associated with the Marshall Mineralized Band**
- Conductors up-stratigraphy (to the east) of lesser priority as these are further away from a heat source

Marshall Lake – Next Steps 2026



LARGE-LOOP ELECTROMAGNETIC (EM) SURVEYS:

1. Large loop ground EM surveys to be completed over the Teck Hill – Gazooma, Gazooma North – RM – Lease targets to help determine depth and along trend extensions of the high-grade copper mineralization in preparation for diamond drilling

DIAMOND DRILLING:

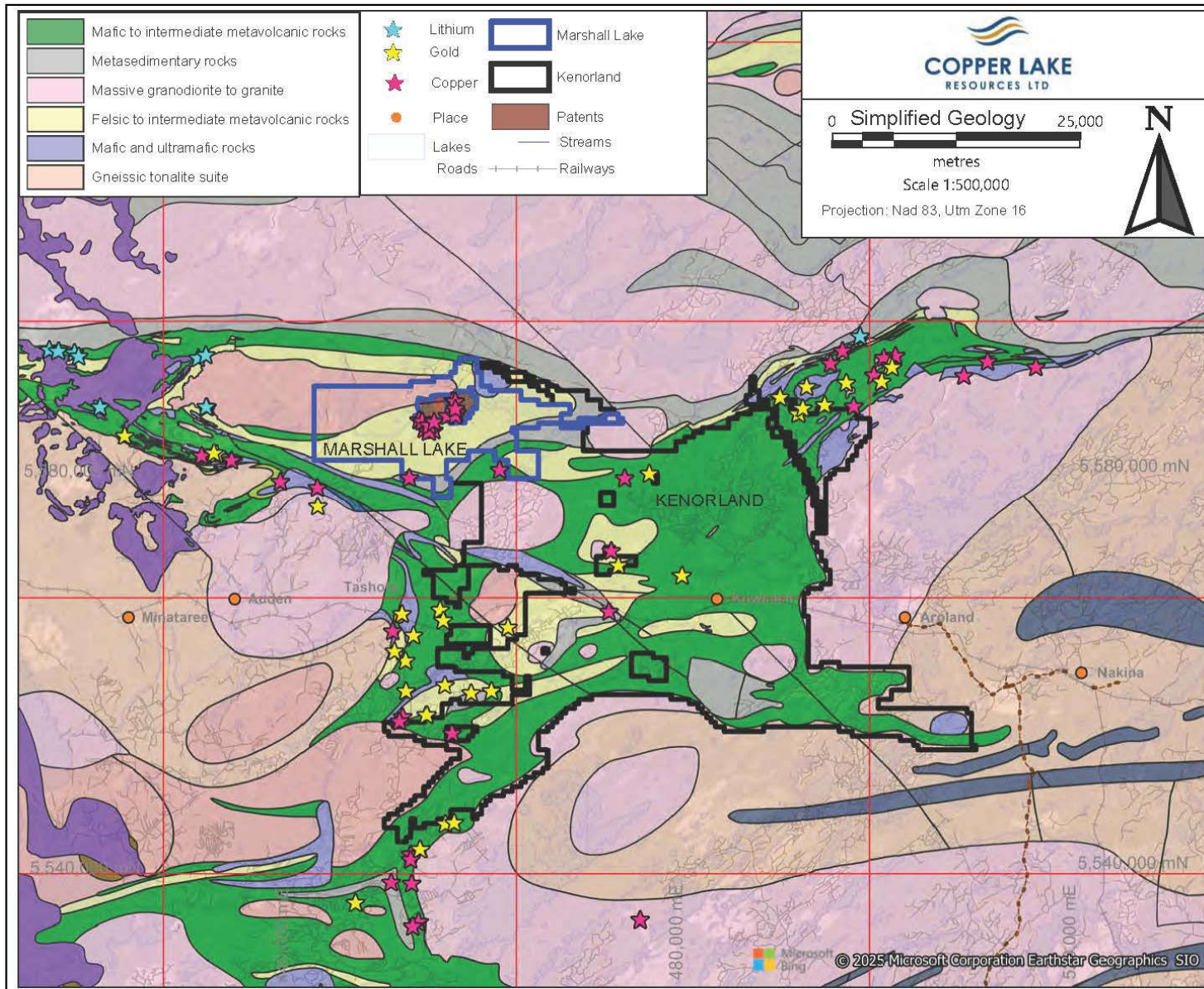
1. Drill testing of the Teck Hill - Gazooma and Gazooma North – RM – Lease occurrences to expand on the limits of the high-grade copper mineralization
2. Additional drilling at the Conductive Centre in the continuing search for a high-grade volcanogenic massive sulphide (VMS) deposit within a large extensive zone of strong hydrothermal alteration. Helicopter support to mobilize, move and demobilize the drill coupled with cribbing the drill with timbers, will allow drilling of the Conductive Centre during the non-freezing season

BOREHOLE ELECTROMAGNETIC SURVEYS (BHEM):

1. BHEM surveying of all drill holes to be completed in 2026 to help guide diamond subsequent diamond drilling programs

Marshall Lake – Recent Developments

**Kenorland Minerals Ltd.
(TSX.V:KLD) Acquires Kowkash
Project Comprising 1,179
Square Kilometres**



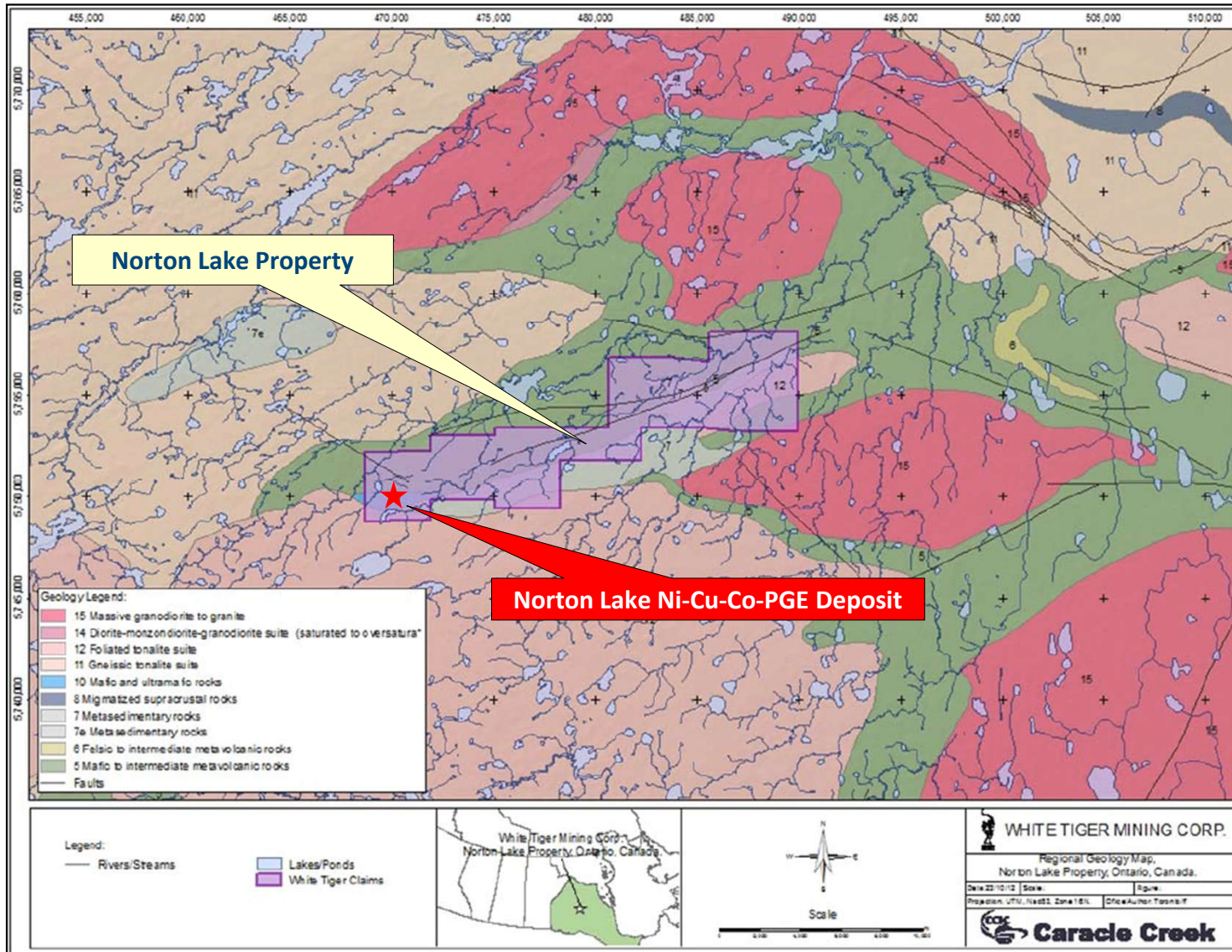
- This large land position ties-on to the south boundary of Copper Lake’s Marshall Lake property
- Comprises a major portion of the under-explored Onaman-Tashota greenstone belt that is prospective for volcanogenic massive sulphide and orogenic gold deposits
- Kenorland is currently very well-funded with over C\$30M in its treasury

Norton Lake Ni-Cu-Co-PGE Property Location

- Located 400 km northeast of Thunder Bay, Ontario close to proposed transportation corridor leading to the 'Ring of Fire'
- 69.79 % interest in the property; JV partner is currently a shell
- **New (Oct 2023) NI 43-101 compliant resource for the Norton Lake Ni-Cu-Co PGE Deposit**
- New mineralized zone discovered below the current Norton Lake deposit
- 11 km strike length of highly prospective geology on the property is largely unexplored

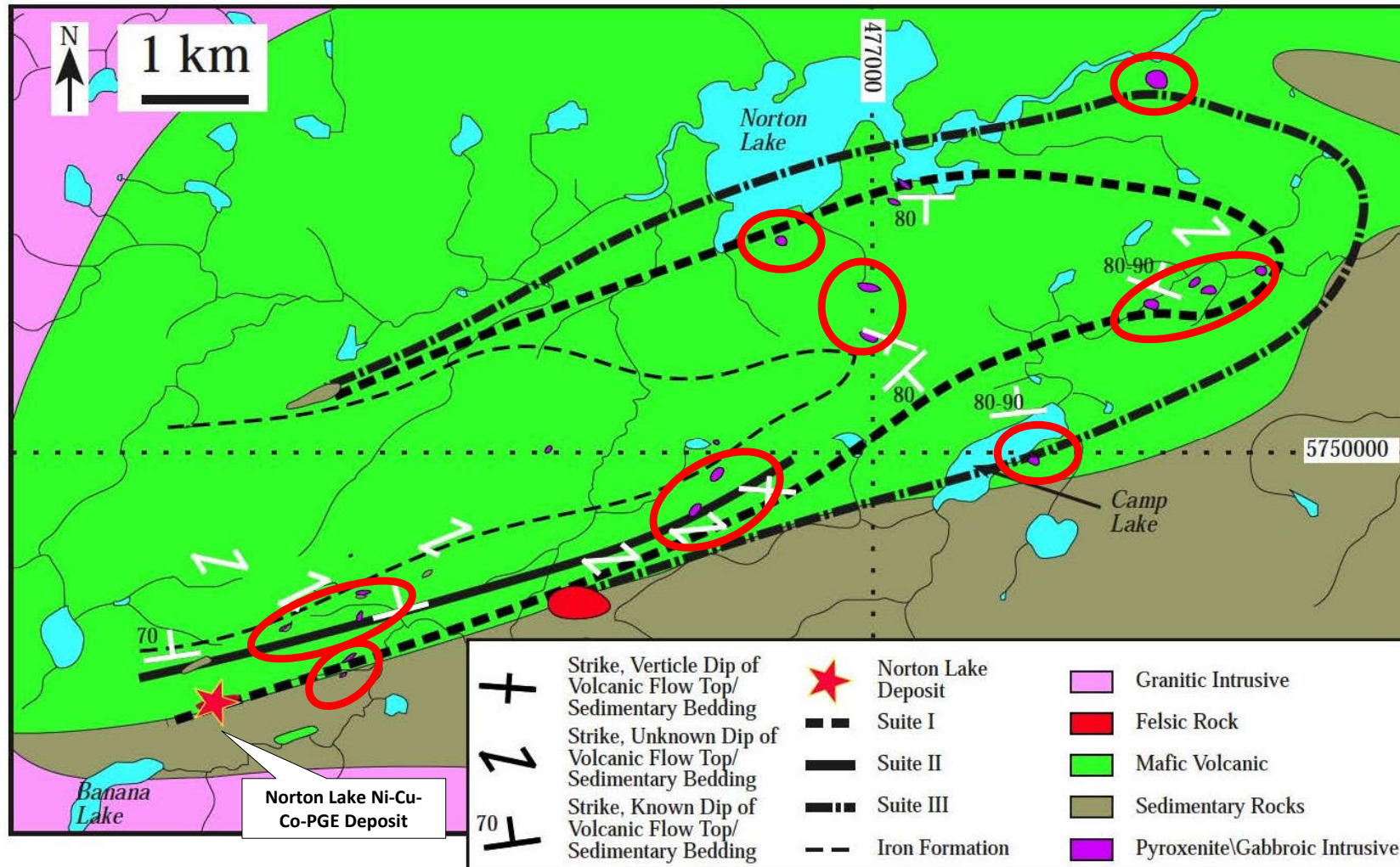


Norton Lake Ni-Cu-Co-PGE Property – Regional Geology



- The Minimiska-Fort Hope greenstone belt (MFGB) is bordered to the north, south and west by granitic batholiths
- The MFGB consists of easterly-trending mafic-felsic volcanic rocks intercalated with metasedimentary rocks typical of Archean greenstone belts cut by felsic to ultramafic intrusions
- Metamorphic grade ranges from upper greenschist to lower amphibolite

Norton Lake Ni-Cu-Co-PGE Property – Property Geology

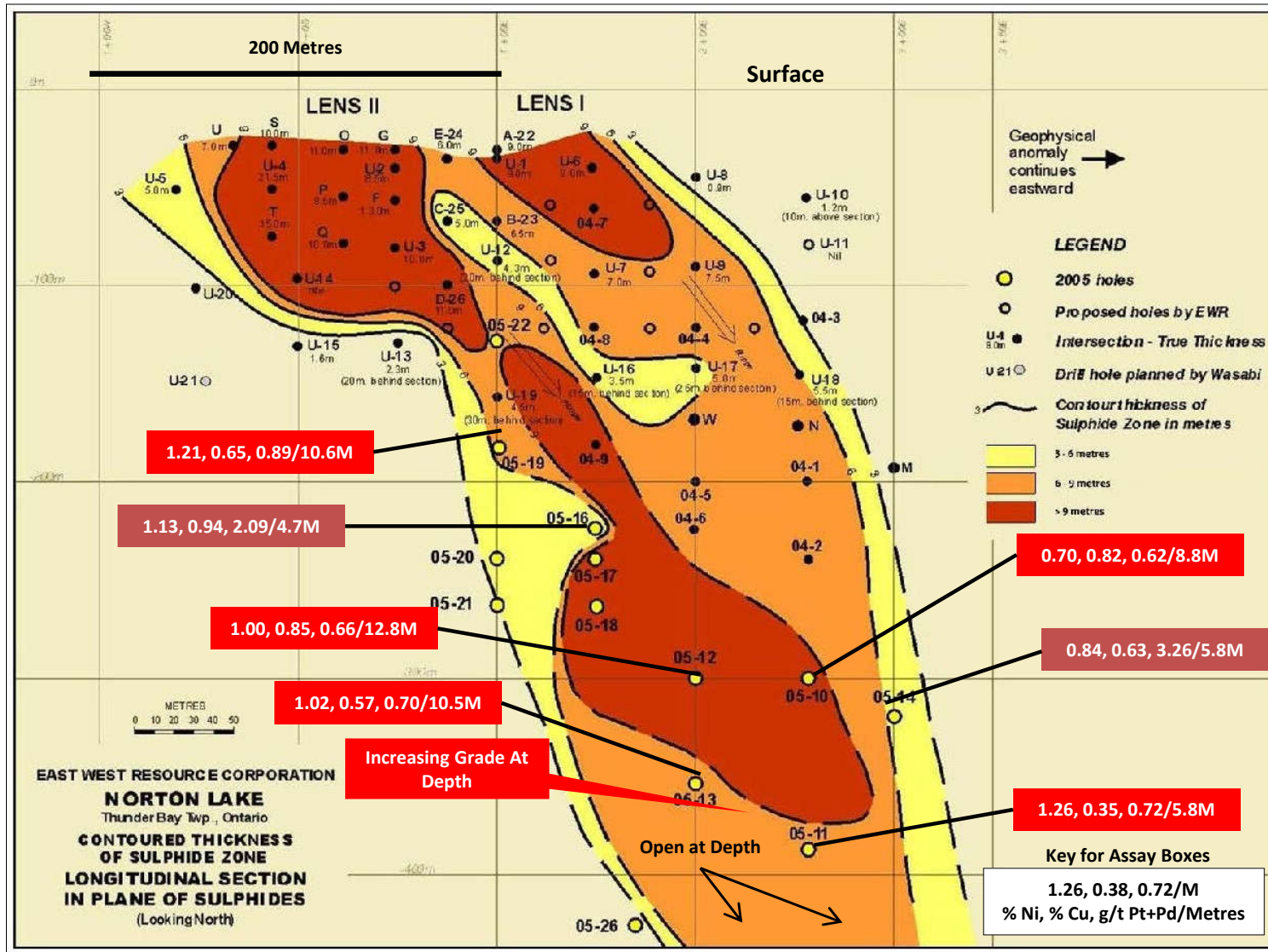


- Massive to pillowed basalt and underlying sediments intruded by mafic to ultramafic rocks (red ovals) occur on the property
- **Norton Lake intrusion that hosts the Norton Ni-Cu-Co-PGDE deposit consists of massive medium to coarse grained pyroxenite that appears to form a sill-like body close to the contact with underlying sediments**
- Less than 2% rock exposure on the property

Norton Lake Ni-Cu-Co-PGE Deposit – Long Section

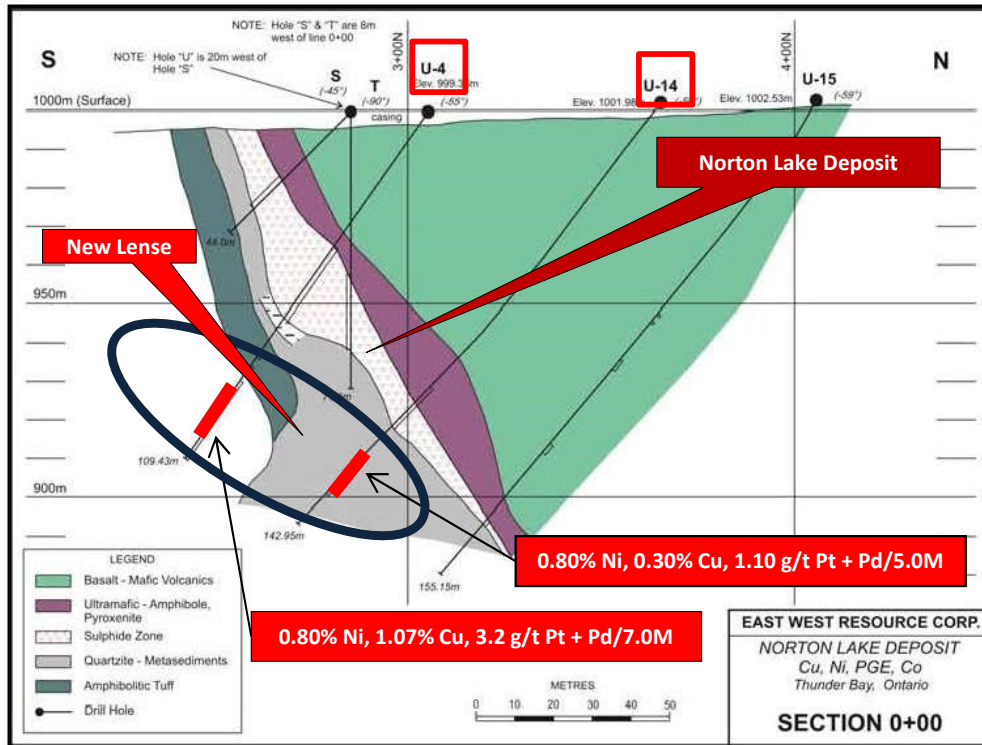
Host lithotype interpreted to be a blade-shaped ultramafic feeder-sill or conduit

- Open at depth below 400 metres; Ni grades increasing at depth
- Bore-hole EM (BHEM) & ground TDEM surveys were completed on the deposit but due to budget constraints the data was never interpreted in efforts to determine extensions to the known mineralization or to find additional deposits in the Norton deposit locale

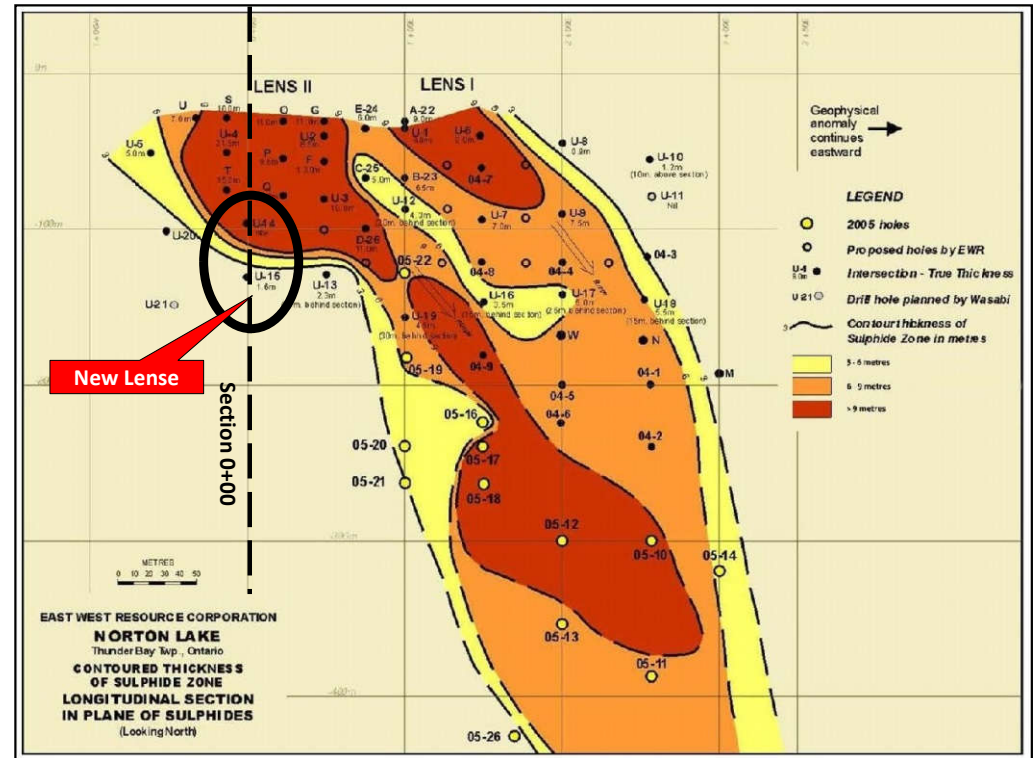


Longitudinal Section Looking to the Northwest

New Mineralized Zone Found Below Norton Deposit



Cross Section 0+00 (Looking Southwest)



Longitudinal Section of Norton Lake Deposit, Looking Northwest

- Two historical holes (U-4 & U-14) cut a new lense of Ni-Cu-PGE mineralization immediately below the known deposit
- The new lense is hosted in sedimentary rocks (possible sulphur source) below the Norton ultramafic feeder dike
- Assays of **0.80% Ni, 1.07% Cu & 3.2 g/t Pt + Pd over 7 metres (hole U-4)** and **0.80% Ni, 0.30% Cu & 1.10 g/t Pt + Pd over 5 metres (U-14)** are encouraging
- Additional follow-up drilling is clearly warranted

Norton Ni-Cu-Co-PGE Property

NI 43-101 Compliant Mineral Resource for the Norton Lake Deposit

- Open at depth for expansion and along strike

New Zone Discovered by Drilling Yielding 0.80% Nickel, 1.07% Copper and 3.20 g/t Palladium over 7.00 Metres

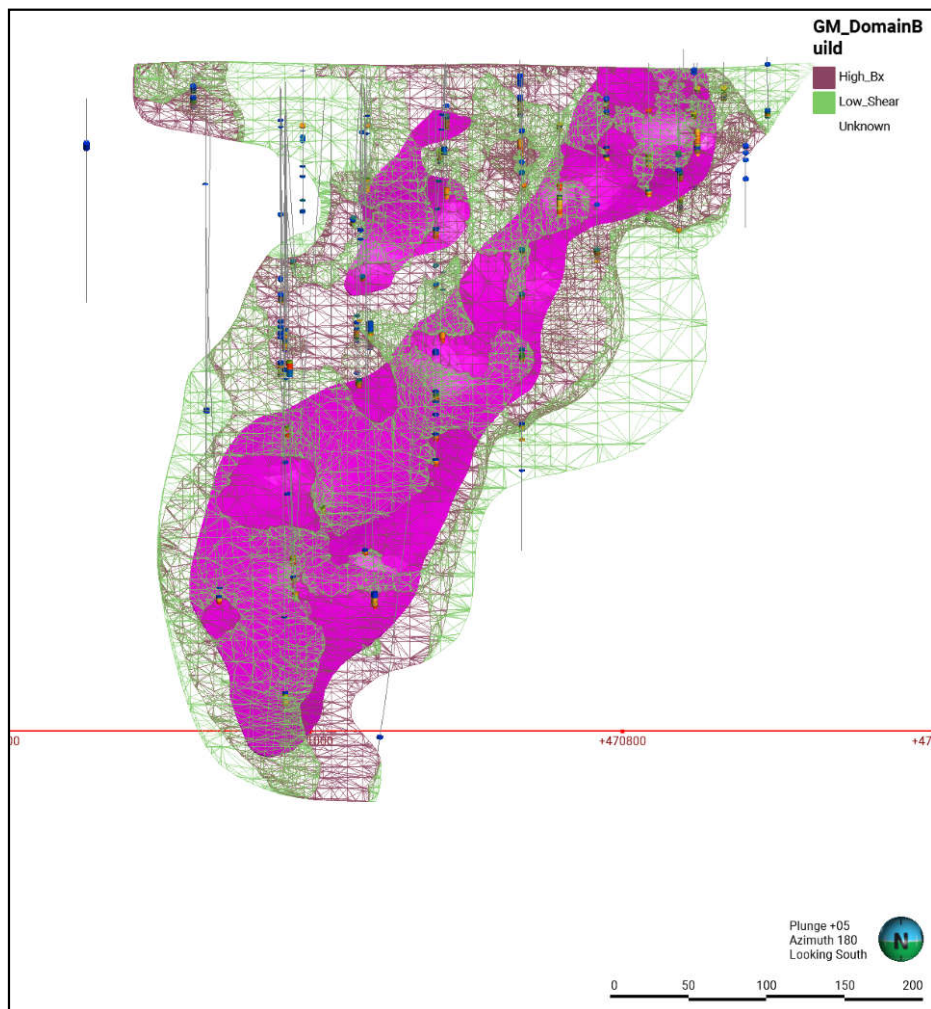
- New Zone is a separate zone and not part of the Norton Lake deposit
- Additional drilling is clearly warranted on the New Zone



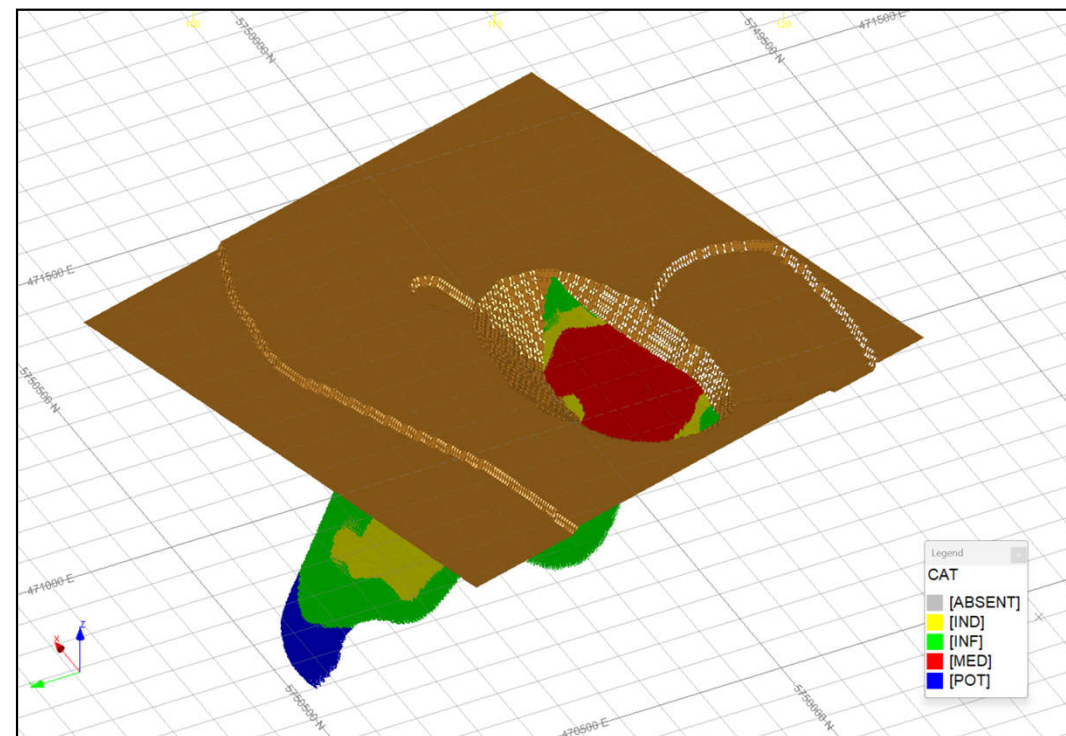
Resource Category	Tonnage	Grade					Contained Metals				
		Ni (%)	Cu (%)	Co (ppm)	Pd (ppm)	Pt (ppm)	Ni (Klbs)	Cu (Klbs)	Co (Klbs)	Pd (Koz)	Pt (Koz)
Open Pit (0.3% Ni COG)											
Measured	607,000	0.68	0.63	331	0.48	0.19	9,135	8,367	443	9	4
Indicated	74,000	0.59	0.44	276	0.40	0.14	962	716	45	1	0
Measured + Indicated	681,000	0.67	0.60	325	0.47	0.19	10,097	9,083	488	10	4
Inferred	22,000	0.57	0.39	262	0.38	0.12	277	188	13	0	0
Underground (0.3% Ni COG)											
Measured	254,000	0.60	0.61	314	0.41	0.11	3,350	3,418	176	3	1
Indicated	860,000	0.78	0.78	358	0.58	0.18	14,857	14,778	678	16	5
Measured + Indicated	1,114,000	0.74	0.74	348	0.54	0.16	18,207	18,196	854	19	6
Inferred	540,000	0.67	0.64	311	0.50	0.14	7,965	7,610	371	8.72	2.51
Total Open Pit and Underground											
Measured	861,000	0.66	0.62	326	0.46	0.17	12,485	11,785	619	13	5
Indicated	934,000	0.77	0.75	351	0.56	0.18	15,819	15,494	723	17	5
Measured + Indicated	1,795,000	0.72	0.69	339	0.52	0.17	28,304	27,279	1,342	30	10
Inferred	562,000	0.67	0.63	310	0.50	0.14	8,242	7,799	384	8.99	2.59

Norton Lake Ni-Cu-Co-PGE Deposit

Isometric View, Looking South



- Green wireframe is the low-grade domain, the dark red wireframe is the high-grade domain and the magenta solid is the massive sulphide domain



Isometric 3D View of Block Model with Pit Shell, Looking South

- Measured Resource in red, Indicated Resource in yellow, Inferred Resource in green, potential at depth in blue

Norton Lake Ni-Cu-Co-PGE Deposit

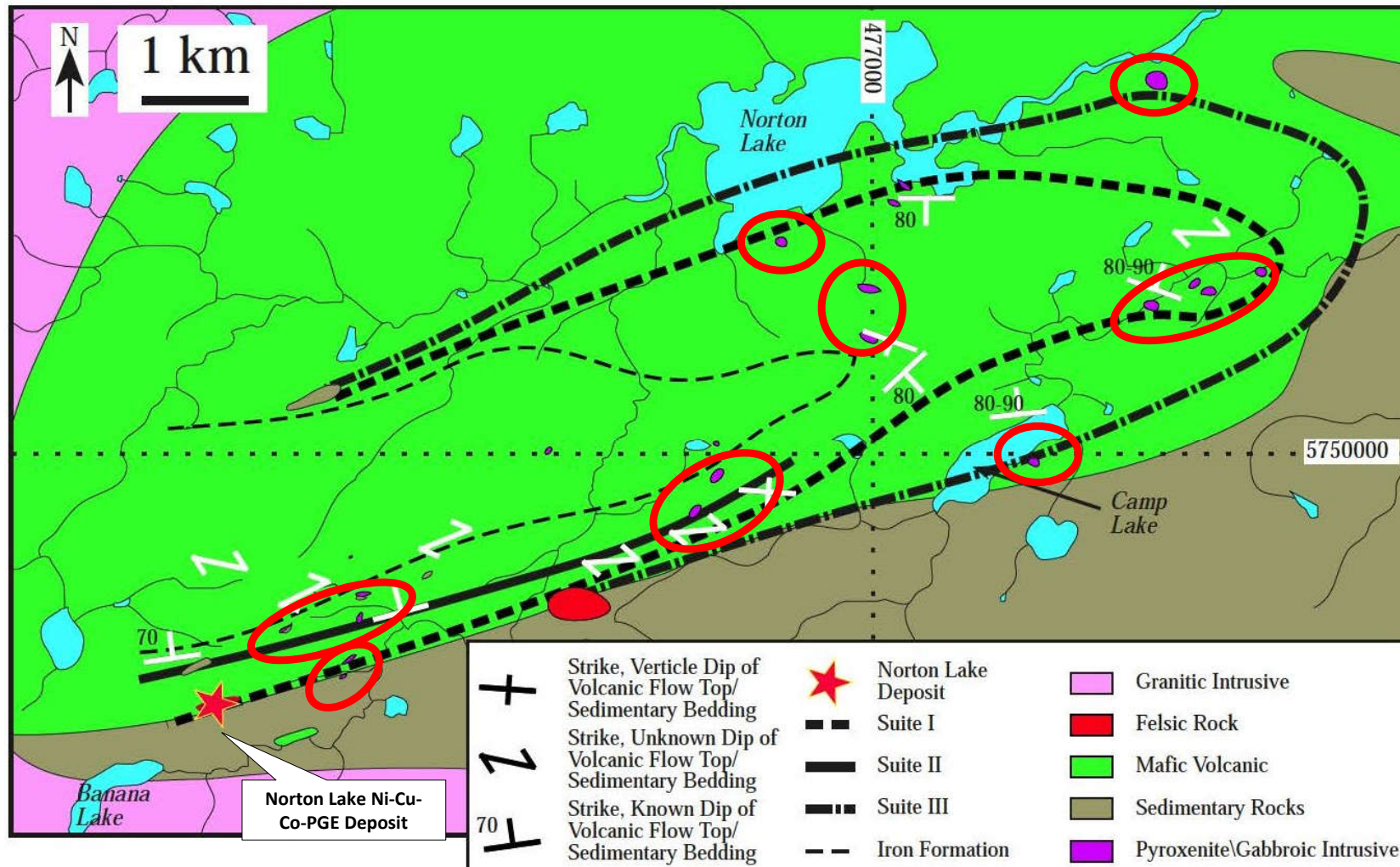


Ultramafic breccia with sulphide matrix of pyrrhotite, pentlandite and chalcopyrite



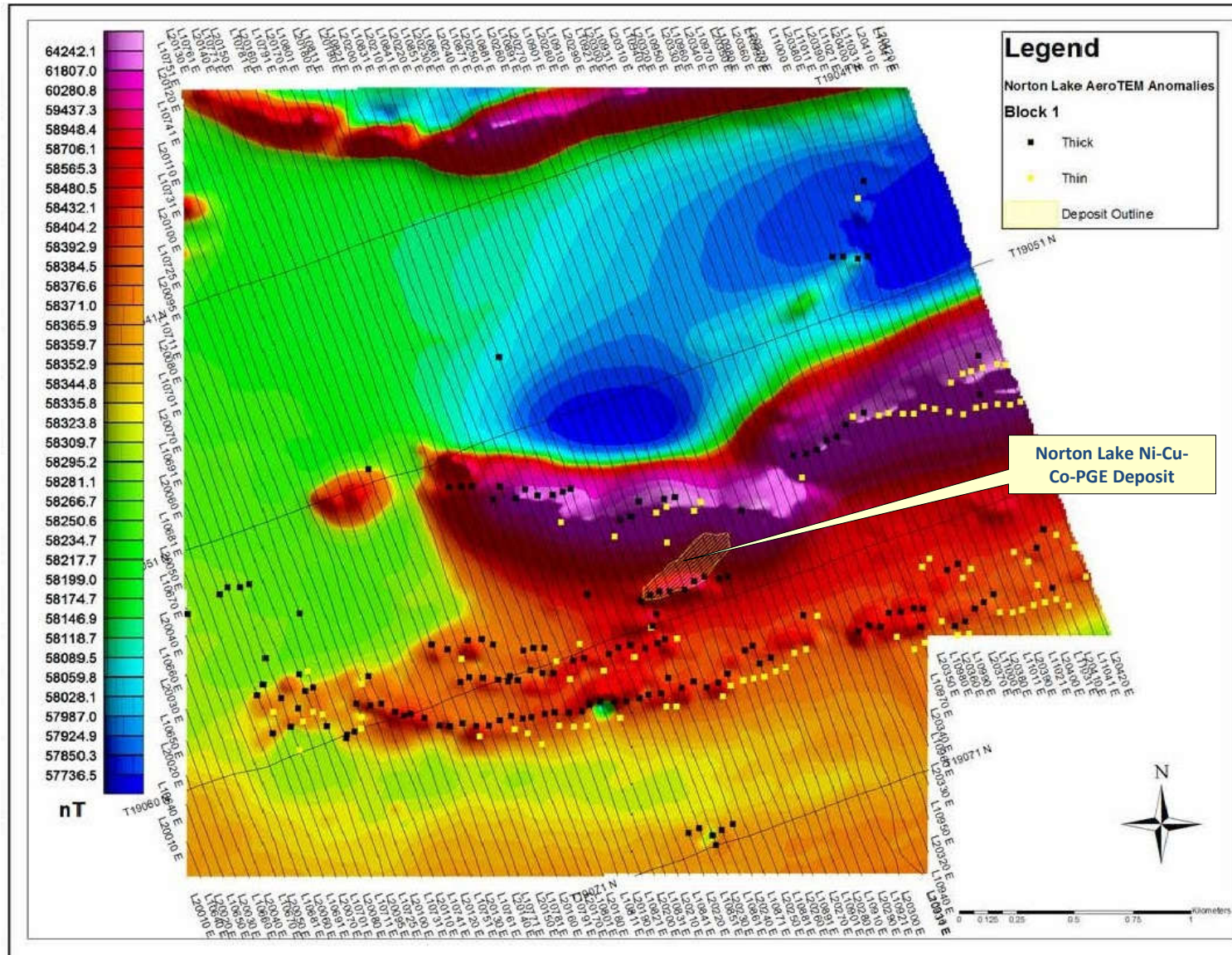
Laminated massive sulphide comprising pyrrhotite, pentlandite and chalcopyrite

Norton Lake, Property-Scale Target Areas



- Ultramafic rocks similar to the Norton Intrusion (Pyroxenite in purple) occur at several locales on the property despite poor outcrop (red ovals)
- Additional mapping and ground electromagnetic surveys (EM) are warranted at such locales in follow-up work prior to diamond drilling

Norton Lake Property – VTEM Survey



Norton Ni-Cu-Co-PGE deposit is associated with a series of conductors (black dots) situated on the south flank of a magnetic high

- Numerous other conductors are present in the deposit locale that warrant immediate follow-up
- Feeder dike/conduit style Ni-Cu-Co-PGE deposits tend to occur in clusters
- VTEM survey was only flown over a portion of the large property

VTEM Conductor Pick Anomalies on Total Field Magnetics

Norton Lake Property – Exploration Opportunities



Deposit Locale:

- The Norton Lake Ni-Cu-Co-PGE deposit remains open at depth for expansion
- BHEM and ground TDEM survey data completed in the Norton deposit locale (in CPL's possession), have not been interpreted and offer potential for expansion of the Norton deposit itself and for the discovery of additional similar deposits in the immediate area
- Drill holes U-4 and U-14 intersected significant Ni-Cu-Co-PGE mineralization and suggest that an additional sulphide lens is present, underlying the Norton deposit

Property-Scale:

- Geology and geophysical surveys indicate a minimum 11 km strike length favourable for the discovery of similar mineralization as at the Norton deposit
- Ultramafic intrusions similar to that hosting the Norton deposit have been mapped along strike near the base of the volcanic pile, proximal to sedimentary rocks; these are high-priority targets for follow-up work

Capital Structure (as at May 31, 2026)



Shares Issued	13,550,188
Options @ \$1.37	830,000
Warrants (\$2.00) (exp. Dec 2026)	794,800
Shares Fully Diluted	15,174,988
Market Cap (based on \$0.25)	\$3.9 M
52 Week Range (TSXV)	\$0.10 - \$0.80
Working Capital at April 30, 2026	(\$1,900,000)

Insider Ownership	
Management and Directors	12.1%
Other Closely Held	27.7%
Total	39.8%



Contact Us

Terry MacDonald, CEO

T: +1-416-561-3626

E: tmacdonald@copperlakeresources.com



Social Media:



[@lake_copper](https://twitter.com/lake_copper)



[@CopperLakeResources](https://www.facebook.com/CopperLakeResources)



[@Copper Lake Resources Ltd.](https://www.linkedin.com/company/CopperLakeResourcesLtd)